

Application - Rooftop Environments



Rising temperatures in metropolitan areas, also known as the urban heat island effect, and the increasing amounts of pollutants and carbon dioxide in the air have resulted in growing environmental concerns. These concerns have created the demand for products and solutions that support efforts to create rooftop environments and other outdoor areas that are conducive to city living.

As a result, Fibergrate Composite Structures is seeing new and existing opportunities for a variety of rooftop environment applications. Whether it is elevated grating required for a rooftop terrace or railings and grating used for a rooftop garden, Fibergrate will provide the solution.

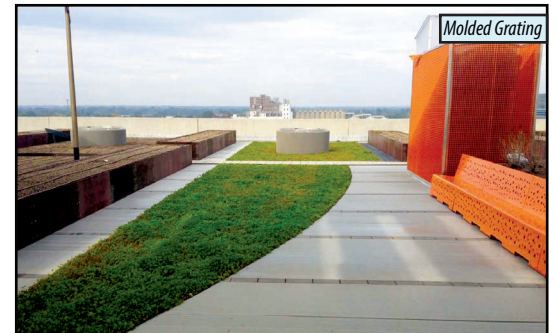
APPLICATIONS & PRODUCTS

- Elevated Rooftop Decking
- Drainage/Stormwater Filtration
- Fibergrate® Molded Grating
- Safe-T-Span® Pultruded Grating
- Grating Pedestal Systems
- Support for Rooftop Gardens
- Terrace Coverage
- Dynaform® Structural Shapes
- Dynarail® Railings and Ladders
- Stair Tread/Stair Tread Covers

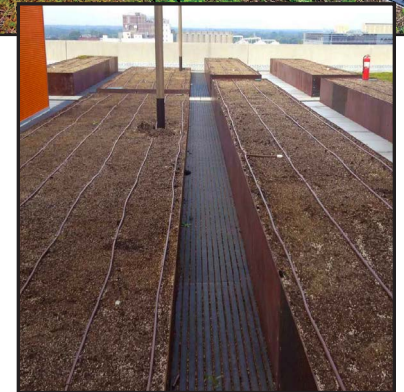
With Fibergrate, you will get reassurance from our nearly fifty years of experience manufacturing fiberglass reinforced plastic (FRP) grating and other engineered composite products.

When compared to traditional materials, Fibergrate products have many benefits. FRP is light weight which saves on installation because heavy-lifting machinery is not necessary. FRP is corrosion resistant and requires very little maintenance which provides for a long-lasting solution. Fibergrate products are also electrically and thermally non conductive which will provide a comfortable surface unaffected by solar heat. Contact us today to learn more!

Hospital Rooftop Commons Area



Fibergrate® gratings were used for drainage and walkways in front of the planter boxes on this rooftop green space. Molded grating was also used to make a storage area more aesthetically pleasing.



Condo Owners' Rooftop Terrace



Micro-Mesh® grating and pedestals create a level, elevated rooftop terrace that ensures corrosion resistance and proper drainage. The grating surface was covered by artificial turf and outdoor furnishings, increasing the owners' living space while providing low maintenance landscaping.



Application - Rooftop Environments

Residential - Apartment Access: Walkways and Seating; Rooftop Pool Area



Fibergrate molded grating was used with Bison Pedestals to hold the grating, along with stone and wood pavers, used on the roof of this luxury apartment building. Artificial turf was placed over the grating resulting in low maintenance green space along walkways and in seating areas. The open mesh of the grating will allow for proper drainage and will not rust or rot.

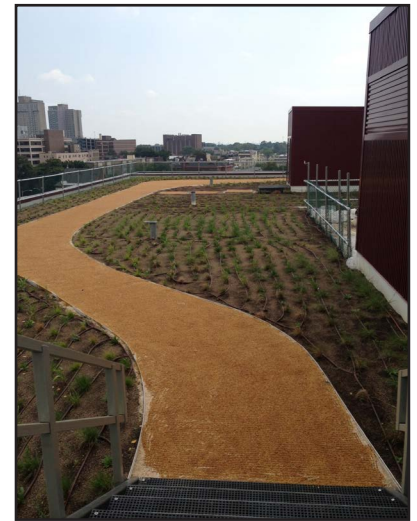
Green Rooftop Environment for Office Building



Some sections of the platform were fabricated on the ground before being lifted to the rooftop.

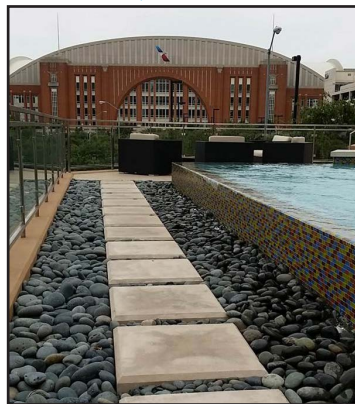
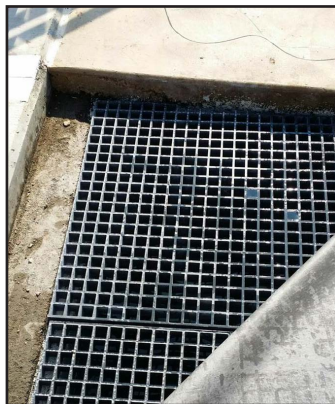


The final space includes Fibergrate's FRP rooftop walkway surrounded by live vegetation.



A city view from the landing of the rooftop platform.

Luxury Apartments - Pool Overflow and Walkways



Fibergrate molded grating and quad head pedestal legs were used over this pool's drainage trench. It was then covered with a synthetic mesh, as an added filter for trash and debris, before being covered with river stones and walking pavers. This resulted in a secure walkway around the exterior of the pool while also allowing for proper drainage of overflowing water.

How do green rooftops help our environment?

- Filtering pollutants & carbon dioxide out of the air
- Reducing stormwater run off
- Saving energy



Phone: 972-250-1633
Fax: 972-250-1530



www.fibergrate.com



info@fibergrate.com

Fibergrate Composite Structures Inc. believes the information contained here to be true and accurate. Fibergrate makes no warranty, expressed or implied based on this literature and assumes no responsibility for consequential or incidental damages in the use of these products and systems described, including any warranty of merchantability or fitness. Information contained here is for evaluation only.
©Fibergrate Inc. 2014-08/14-Application-RooftopEnvironments.PDF

